

PART OF A P.U.D.
LA PAZ AT BOCA POINTE - PHASE III
 A PLAT OF A PORTION OF SECTION 28, TOWNSHIP 47 SOUTH, RANGE 42 EAST
 AND ALSO BEING A REPLAT OF A PORTION OF TRACT P, BOCA POINTE NO. 1, AS RECORDED
 IN PLAT BOOK 42, PAGES 141-143 OF THE PUBLIC RECORDS OF PALM BEACH COUNTY, FLORIDA

JOHN A. GRANT, JR., INC.

CONSULTING ENGINEERS AND LAND SURVEYORS

BOCA RATON, FLORIDA

OCTOBER, 1986

SHEET 2 OF 2

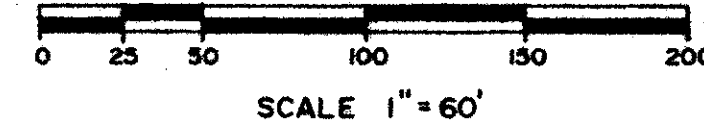
28/47/42

SUBDIVISION <i>La Paz</i>	
BOOK 56	PAGE 90
FLOOD ZONE A01	FLOOD MAP # 2408
QUAD # 54	TAB # 10
SE	33483
PUD NAME <i>Boca Pt - Phase III</i>	

90

CURVE TABLE

NO.	RADIUS	ARC	DELTA	TANGENT	CHORD	CHORD BEARING
1	295.00	292.51	56° 48' 46"	159.55	280.68	S 89° 24' 23" W
2	295.00	214.65	52° 20' 00"	115.46	207.26	N 89° 21' 14" W
3	295.00	120.47	23° 23' 54"	61.09	119.64	S 77° 10' 43" W
4	350.00	52.96	06° 36' 12"	26.33	52.51	N 86° 48' 14" W
5	265.00	262.77	56° 48' 46"	143.32	252.13	S 89° 24' 23" W
6	265.00	242.05	52° 20' 00"	130.20	233.72	N 88° 21' 14" W
7	265.00	108.22	23° 23' 54"	54.87	107.47	S 77° 10' 43" W
8	235.00	233.02	56° 48' 46"	127.10	223.59	S 89° 24' 23" W
9	295.00	269.45	52° 20' 00"	144.94	260.18	N 88° 21' 14" W
10	235.00	99.97	23° 23' 54"	48.66	95.30	S 77° 10' 43" W
11	295.00	24.68	04° 47' 34"	12.35	24.67	N 64° 35' 01" W
12	295.00	184.51	36° 50' 09"	95.38	181.52	S 83° 23' 51" W
13	235.00	23.90	06° 49' 37"	11.96	23.89	S 68° 23' 35" W
14	235.00	72.07	17° 34' 17"	36.32	71.79	S 80° 06' 32" W
15	295.00	60.26	11° 42' 17"	30.24	60.16	N 72° 49' 56" W



NOTES

Bearings shown hereon are based on a bearing of S. 88° 52' 40" W. along the North right-of-way line of Lake Worth Drainage District Lateral No. 50, as shown on the record plat of Boca Pointe No. 1 as recorded in Plat Book 42, Pages 141 - 143 of the public records of Palm Beach County, Florida.

- P.R.M. Indicates Permanent Reference Monument.
- P.C.P. Indicates Permanent Control Point.
- U.E. Indicates Utility Easement.
- D.E. Indicates Drainage Easement.
- L.M.E. Indicates Lake Maintenance Easement

No buildings or any kind of construction shall be placed on utility or drainage easements.

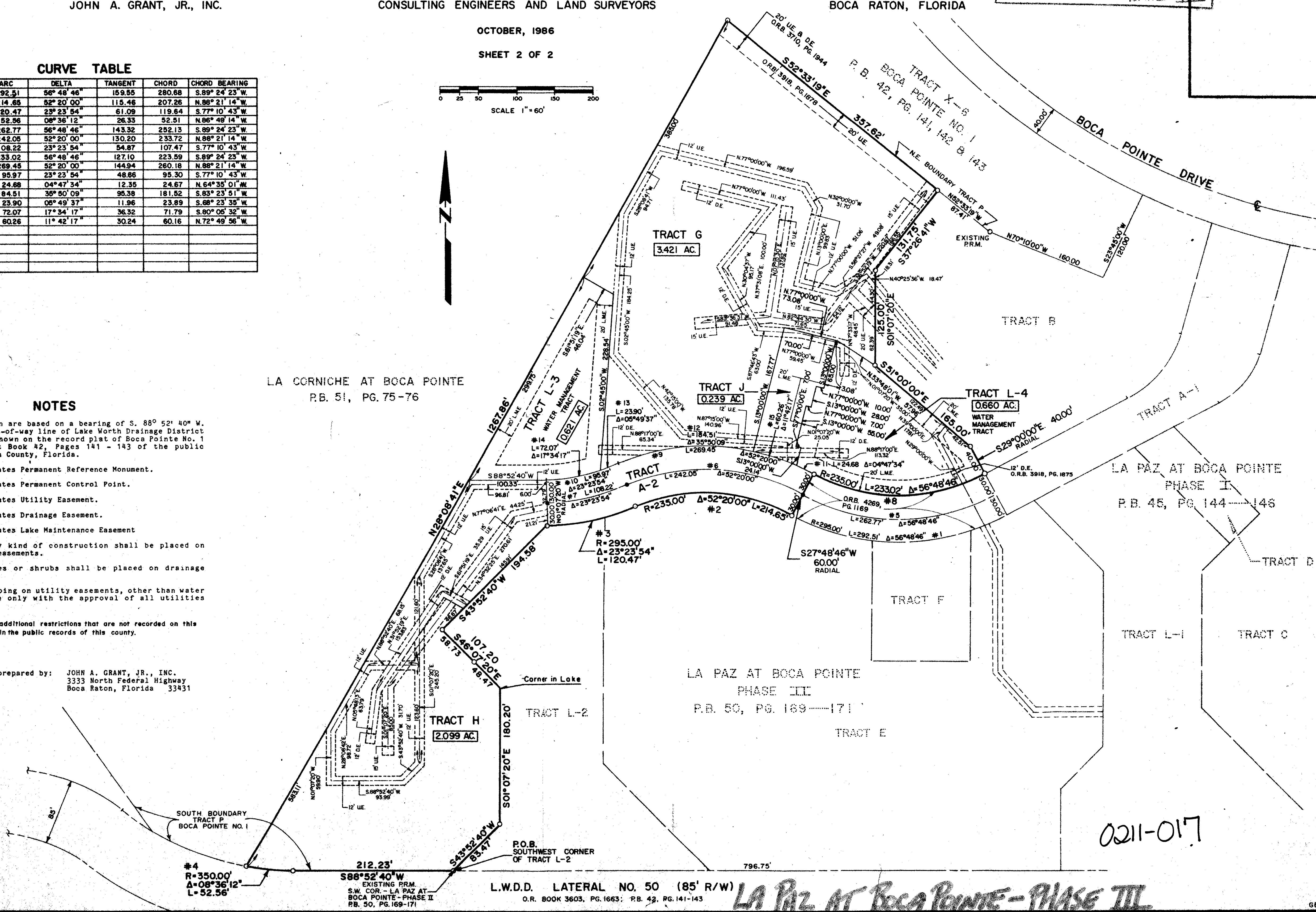
No structures, trees or shrubs shall be placed on drainage easements.

Approval of landscaping on utility easements, other than water and sewer, shall be only with the approval of all utilities occupying same.

NOTICE: There may be additional restrictions that are not recorded on this plat that may be found in the public records of this county.

This instrument was prepared by: JOHN A. GRANT, JR., INC.
 3333 North Federal Highway
 Boca Raton, Florida 33431

LA CORNICHE AT BOCA POINTE
 P.B. 51, PG. 75-76



0211-017

L.W.D.D. LATERAL NO. 50 (85' R/W)
 O.R. BOOK 3603, PG. 1663; P.B. 42, PG. 141-143

LA PAZ AT BOCA POINTE - PHASE III